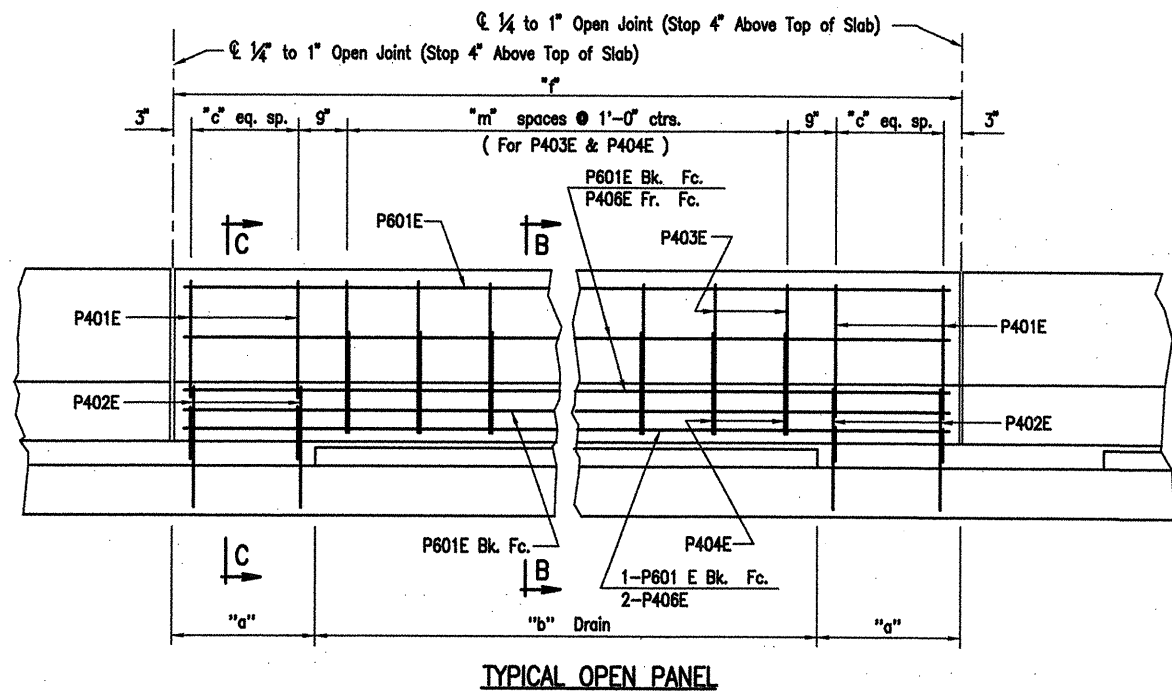
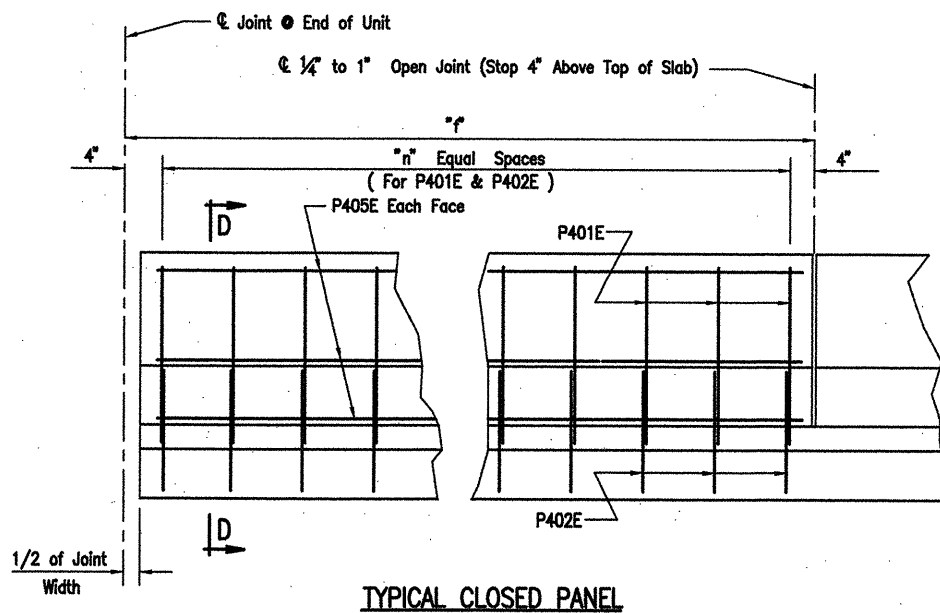


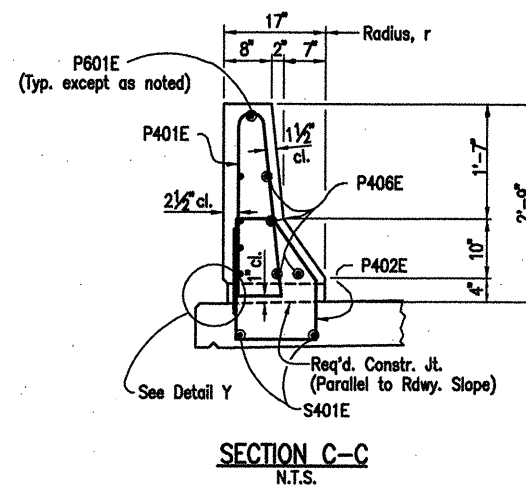
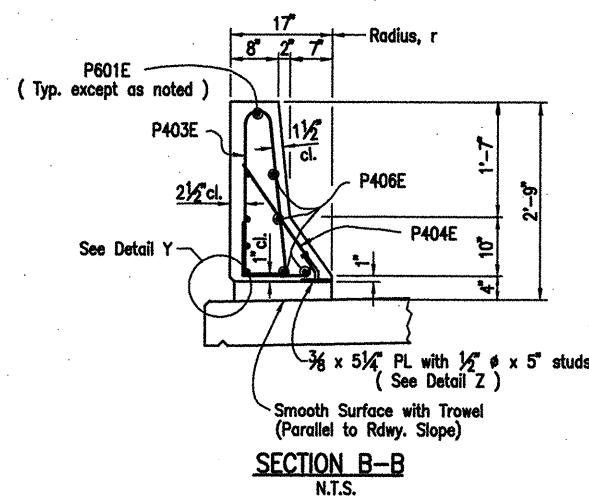
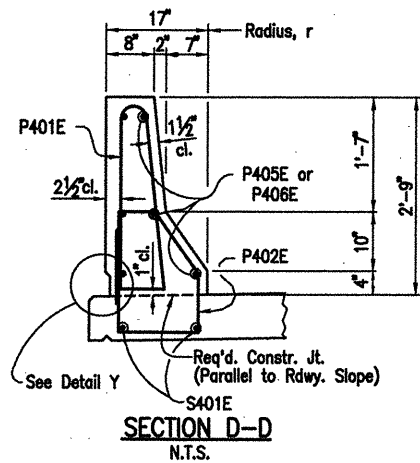
COMPANY\1999 JOBS\99-044 AHTD\WHITERIVER\JOB 110395\368 parapet\11

ACAD SCALE: 6"=1'-0"

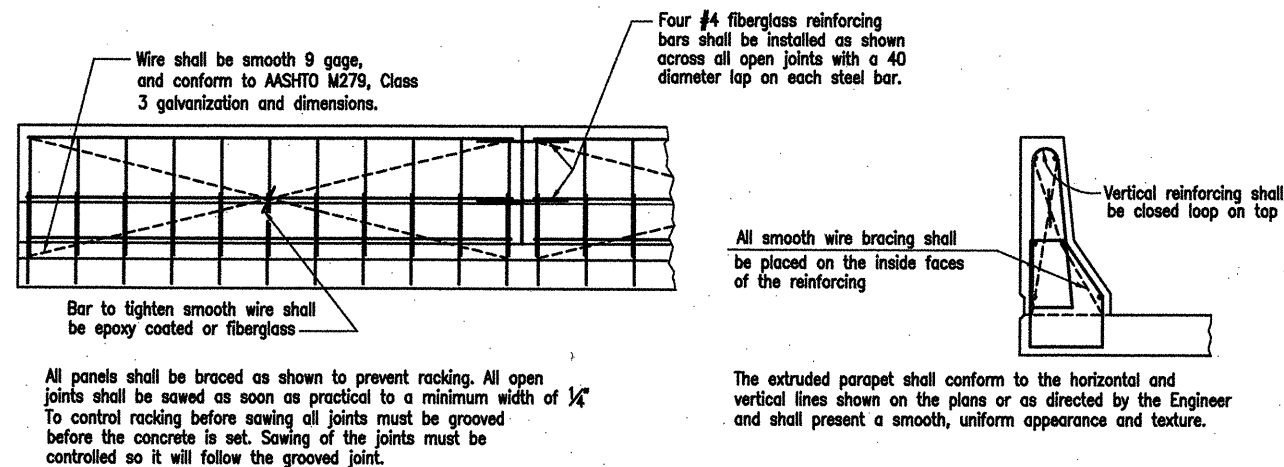
DATE REVISED	DATE FILMED	DATE REVISED	DATE FILMED	FED. ROAD NO.	STATE	FED. AID PROJ. NO.	SHEET NO.	TOTAL SHEETS
					ARK.			
						110395	79	243
06830 284', 330' & 368' UNIT 47075								



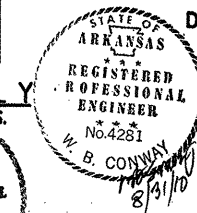
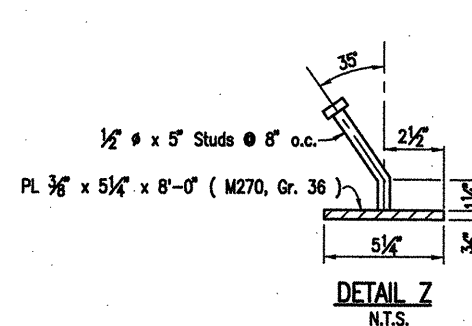
ELEVATION OF TYPICAL PARAPET RAIL
(As viewed from roadway side of parapet)
N.T.S.



Note:
The surfaces of the 3/8" Plates which will not be in contact with concrete shall be painted with aluminum epoxy paint in accordance with Section 638 or as approved by the Engineer. Only one coat is required and shall be applied in the fabricator's shop. Painting will not be paid for directly, but will be considered subsidiary to Structural Steel or Class S (AE) Concrete.



DETAILS OF OPTIONAL SLIPFORMING OF CONCRETE PARAPET RAIL (OPEN OR CLOSED)
N.T.S.



ALTERNATE NO. 1
DETAILS OF 284', 330' & 368'-0" CONT.
PRESTRESSED CONCRETE GIRDER UNITS
(SHEET 15 OF 19)
WHITE RIVER STR. & APPRS.
(CLARENDON) (PH III) (F)
MONROE COUNTY
ROUTE 79 SEC. 13
ARKANSAS STATE HIGHWAY COMMISSION
LITTLE ROCK, ARK.

Engstrom/Modjeski and Masters, Inc.

DRAWN BY: GPT DATE: Nov. 07 FILENAME: b11039512_s13
CHECKED BY: YO DATE: Nov. 01 SCALE: 6" = 1'-0"
DESIGNED BY: GPT DATE: Nov. 01
BRIDGE NO. 06830 DRAWING NO. 47075